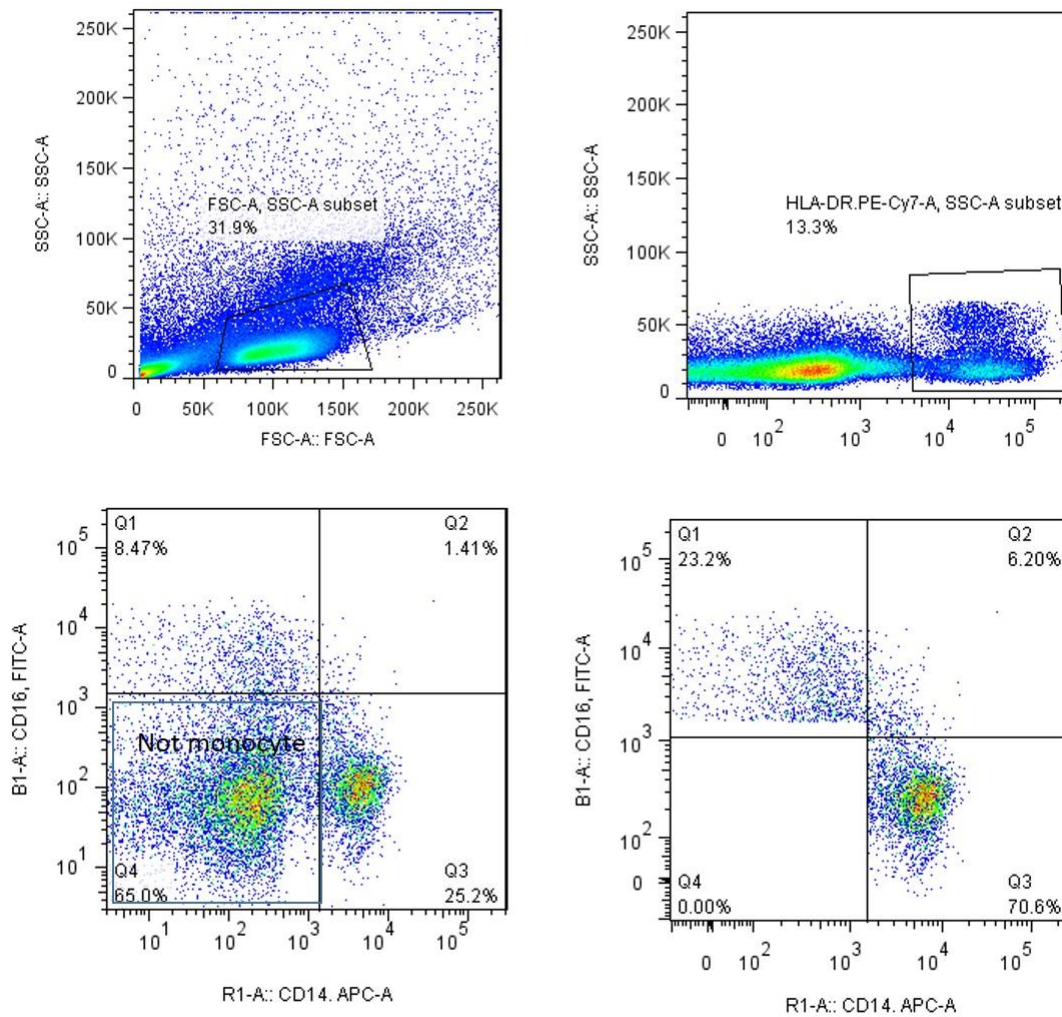


Supplementary Figure 1. The flow chart of study.



Supplementary Figure 2. Characterization of monocyte subpopulations. Initially, doublets were debarred and cells were selected based on FSC (forward scatter) versus SSC (side scatter) distribution. Cells in PBMC were simultaneously stained with anti-CD16- FITC, anti-CD14- APC, and anti-HLA-DR- PE-Cyanine7. Monocytes were gated based on HLA-DR expression, and were strategized in a CD14 versus CD16 graph in order to categorize all three monocyte subpopulations: classical monocytes (CD14⁺⁺CD16⁻), intermediate monocytes (CD14⁺⁺CD16⁺) and non-classical monocytes (CD14⁻CD16⁺⁺). Shown are representative dot plots of one of cases.