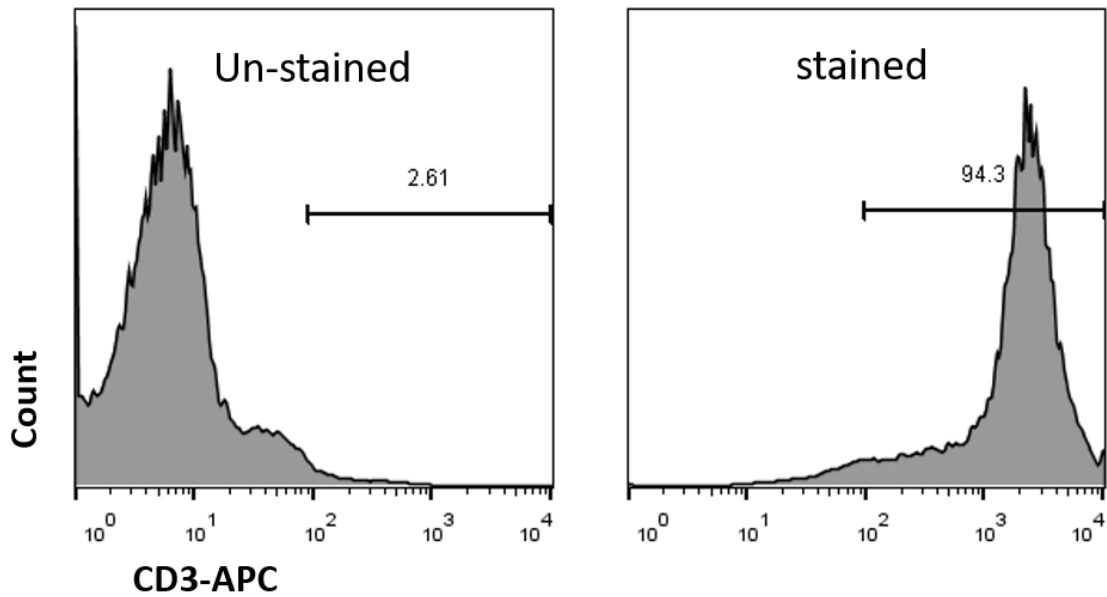
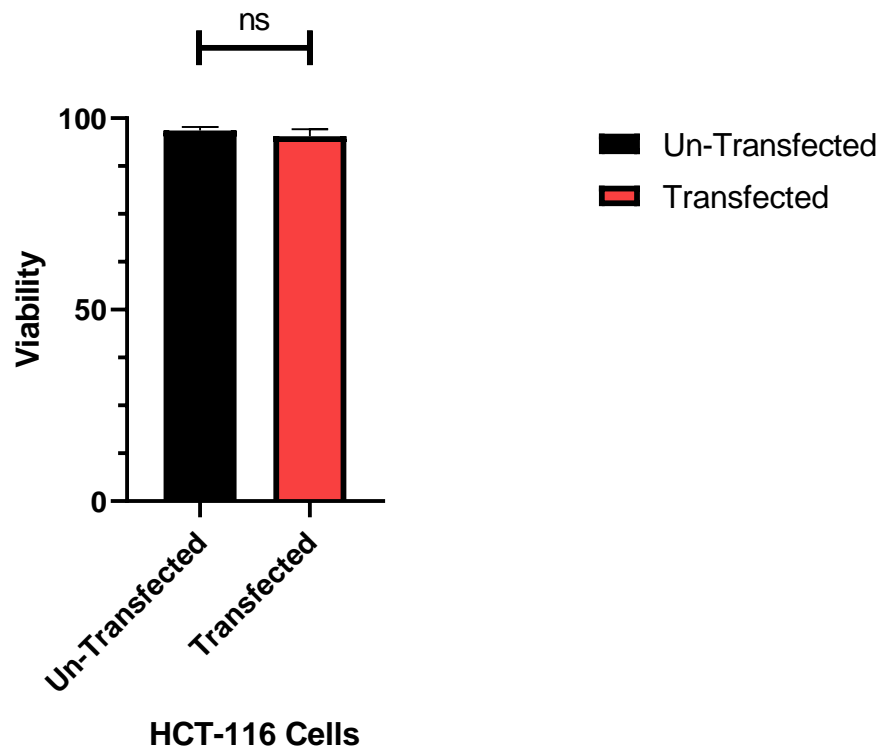


Supplementary Table 1. Primers used in the qRT-PCR analysis.

Gene	Forward Primer	Reverse Primer
PKM2	5' ATTATTTGAGGAACTCCGCCGCCT 3'	5' ATTCCGGGTCACAGCAATGATGG 3'
18S	5' GTAACCCGTTGAACCCCAT 3'	5' CCATCCAATCGGTAGTAGCG 3'
Beta-actin	5' ATGTGGCCGAGGACTTTGATT 3'	5' AGTGGGGTGGCTTTTAGGATG 3'



Supplementary Figure 1. Representative flow cytometry plots for the analyzing the purity of T cells. 1.5×10^6 of PBMC cells were cultured in complete RPMI 1640 media (in a 24-well plate) that contained 100IU hIL-2. To activate and enrich T cells 3 $\mu\text{g}/\text{ml}$ anti-CD3 antibody and 10 $\mu\text{g}/\text{ml}$ anti-CD28 antibody were added to the media and T cells were incubated for 96h at 37°C. The purity of T cells was evaluated with anti-CD3-APC antibody using flow cytometry.



Supplementary Figure 2. The viability of transfected and untransfected HCT-116 cells. 10 μ l of trypan blue 0.4 % solution and 10 μ l of cell suspension were mixed and then applied to a hemocytometer. Then, the viability was checked using light microscopy. Student's t-test was used to compare the groups.